

**AGENDA ITEM**

**EXECUTIVE SCRUTINY  
COMMITTEE**

**20 DECEMBER 2011**

**REPORT OF DIRECTOR OF  
LAW AND DEMOCRACY**

**SCRUTINY WORK PROGRAMME – SELECTION OF IN DEPTH SCRUTINY REVIEWS**

**SUMMARY**

The report presents proposals for the Scrutiny Work Programme for 2012/13.

**RECOMMENDATIONS**

Executive Scrutiny Committee is asked to review the suggested topics, consider the priorities from Scrutiny Liaison Forum and agree the Scrutiny Work Programme allocating in-depth reviews to Select Committees.

**WORK PROGRAMME 2010/11**

1. For the past three years, the Council's Select Committees have in the main focused on providing support to the Council's Efficiency, Improvement and Transformation (EIT) Programme. Select Committees now are engaged in the final year of the EIT programme and all of Year 3 EIT reviews (with the exception of Learning Disability and Mental Health) are nearing completion or will be completed by March 2012. The current programme is summarised below:

<b>Select Committee</b>	<b>EIT Review</b>	<b>Date Reporting to Cabinet</b>
Arts, Leisure & Culture	Two "Gateway" reviews: - Registration and Bereavement Services - Children's Social Care	February 2012 March 2012
Adult Services and Health	- Learning Disability and Mental Health	July 2012
Children & Young People	- Task and Finish Review - EIG - School Effectiveness	November 2011 March 2012
Environment	- Care for Your Area	December 2011
Housing & Community Safety	- Community Safety and Security Services	February 2012
Corporate and Social Inclusion	- Commissioned Carers and Independent Living Services	April 2012
Regeneration and Transport	- Regeneration and Economic Development	December 2011
Executive Scrutiny	- Legal Services ("Reporting In" Review)	January 2012

Committee		
-----------	--	--

2. In addition, a request from Cabinet to undertake a task and finish review of subscriptions to external organisations was agreed by Executive Scrutiny Committee at their meeting on 22 November. This review will be carried out by Corporate and Social Inclusion Select Committee beginning in January 2012.

### **SUGGESTED TOPICS FROM 2012**

3. On 25 October 2011, Executive Scrutiny Committee agreed that the 2012/13 work programme should consist of a combination of the following elements:
- **In depth topic based reviews** – Based on Member and Officer Suggestions
  - **Support for the Value for Money Programme** – This could include new reviews of any outstanding service areas or follow up work emanating from earlier EIT reviews which were identified for further investigation. Experience from earlier EIT reviews has confirmed that Select Committees are able to add most value to the process where there is a public facing dimension to the work undertaken.
  - **A robust framework for local and self regulation** – Select Committees will receive half yearly performance information relating to the portfolio areas within the remit of the Committee. The framework would ensure that important issues of local concern such as dignity in health and social care were addressed, utilising enhanced scrutiny powers to scrutinise all commissioners and providers.
  - **Health Scrutiny** – In depth topic based reviews on health issues, overview of local NHS transitional arrangements, continued updates on Momentum and other issues (e.g. statutory consultations, Quality Accounts etc.)
  - **Crime and Disorder Scrutiny** – Continued development of the role with reference to the Police Reform and Social Responsibility Bill.

### ***PICK System***

2. Topics have been sought from Members and Officers on a standard pro forma in line with previous practice and other public bodies on the Local Strategic Partnership have also been invited to make suggestions. In addition, members of the public are able to suggest an issue for scrutiny at any time during the year.

3. Justification of proposals is presented based on public interest, impact, performance and efficiency issues and context. This PICK system approach allows a score to be given to each suggestion to help with prioritisation of topics. It should be stressed that the score is a tool to aid prioritisation and is not binding in any way.

4. All of the suggestions received are summarised in the schedule set out in **Appendix 1** and given a PICK score. **Appendix 2** sets out how reviews could potentially be allocated to Select Committees. Each suggestion is cross referenced with supporting information. A pro forma for each suggestion is included at **Appendix 3**. An explanation of the PICK scoring method is attached at **Appendix 4**.

5. Scrutiny Liaison Forum met on 19 December 2011 to consider the priorities for scrutiny reviews for the Authority for 2012/13 for consideration and approval by Executive Scrutiny Committee and a verbal update will be provided to Executive Scrutiny Committee on the priorities from Scrutiny Liaison Forum.

6. In addition to the suggestions for in depth reviews, a commitment was made at Full Council on 9 March 2011 to include a review of Gated Communities within the Scrutiny Work Programme. The Council passed the following motion:

“This Council acknowledges the trend towards increased numbers of gated communities within the Stockton Borough Council Area necessitating entry codes to access and leave.

Council recognises the practical difficulties this creates for delivery of mail and other communications. Council therefore requests that the issue be considered by the Executive Scrutiny Committee or a Task Finish Group”.

7. Subsequently, Executive Scrutiny Committee agreed to incorporate this issue into the scrutiny work programme on 5 April 2011 as a Task and Finish Review.

## **OTHER WORK**

8. In addition to the in depth review work, Select Committees will continue to receive the usual action plans and progress reports in respect of the reviews which have concluded. The annual overview meetings will also be held in the New Year.

9. Health and Adult Services Select Committee continues to be responsible for receiving statutory and non statutory health consultations and briefings. It is therefore important to build in a degree of capacity within the programme to deal with other emerging issues.

## **NEXT STEPS**

10. Following this meeting, the priorities from the Forum will be presented to Executive Scrutiny Committee on 20 December 2011 for consideration in the setting of the work programme. This will include all suggestions presented to the Scrutiny Liaison Forum.

11. It is proposed to review the scrutiny work programme further Autumn 2012.

## **FINANCIAL AND LEGAL IMPLICATIONS**

There will be staffing implications in order to provide the necessary support for reviews.

## **RISK ASSESSMENT**

The selection of appropriate topics for review can help to support service improvement; the selection of inappropriate topics will lead to the waste of officer and Member time and resources.

### **Director of Law and Democracy**

**Name of Contact Officer:** Margaret Waggott  
**Telephone No:** 01642 527064  
**Email Address:** [margaret.waggott@stockton.gov.uk](mailto:margaret.waggott@stockton.gov.uk)

**Name of Contact Officer:** Judy Trainer  
**Telephone No:** 01642 528158  
**Email Address:** [judith.trainer@stockton.gov.uk](mailto:judith.trainer@stockton.gov.uk)

<u>Background Papers:</u>	None
<u>Ward(s) and Ward Councillors:</u>	Not Ward Specific
<u>Property Implications:</u>	None

## SCRUTINY WORK PROGRAMME 2012/13

Topic No.	Page No.	Suggested Topic	Public Interest	Impact	Council Efficiency & Performance	Keep in Context	Total	Weighted Total	Comments
1	7	Long Term Empty Properties	3 (3.6)	3 (3.6)	2 (2.8)	3 (3.6)	11	13.6	Potential first review for R&T
2	9	Child Placements & Foster Care	3 (3.6)	3 (3.6)	2 (2.8)	3 (3.6)	11	13.6	Recommended for review summer 2012 (Template to be completed when further scoping work undertaken)
3	10	Quality of Childcare	3 (3.6)	3 (3.6)	2 (2.8)	3 (3.6)	11	13.6	Potential first review for CYP
4	16	Tobacco Control	3 (3.6)	3 (3.6)	2 (2.8)	3 (3.6)	11	13.6	Potential first review for HCS
5	17	Prosthetics	2 (2.4)	3 (3.6)	2 (2.8)	3 (3.6)	10	12.4	Recommend referral to Tees Valley Joint Health Scrutiny Committee
6	18	Drug Treatment Programme	3 (3.6)	3 (3.6)	1 (1.4)	3 (3.6)	10	12.2	Recommended for review at a later stage in the work programme – potentially an item at an overview meeting of Adult Services and Health at this stage to understand baseline and identify issues
7	20	Employability Support/Quality of Training	3 (3.6)	3 (3.6)	1 (1.4)	3 (3.6)	10	12.2	Potential second review topic for R&T
8	22	Fuel Poverty	3 (3.6)	3 (3.6)	1 (1.4)	3 (3.6)	10	12.2	Potential first review topic for Environment
9	23	Domiciliary/Home Care	3 (3.6)	3 (3.6)	1 (1.4)	3 (3.6)	10	12.2	Potential next review topic for Adult Services and Health to follow EIT review of LD&MH (and incorporate officer review of Domiciliary Care Strategy and Processes).
10	25	Energy Supply	1 (1.2)	3 (3.6)	2 (2.8)	3 (3.6)	9	11.2	Potential first topic for CSI
11	26	Impact of Welfare Reforms on Rental Properties	3 (3.6)	3 (3.6)	1 (1.4)	2 (2.4)	9	11	Potential second topic for CSI
12	27	Visitor Economy/Festival Programme/Railway Heritage	3 (3.6)	3 (3.6)	1 (1.4)	2 (2.4)	9	11	Potential full year review topic for ALCS

13	31	NEETS	3 (3.6)	3 (3.6)	1 (1.4)	2 (2.4)	9	11	Potential second CYP review topic Sept 12
14	36	Performance of Housing Providers	3 (3.6)	3 (3.6)	1 (1.4)	1 (1.2)	8	9.8	Recommended for review late 2012 to allow for sufficient time to elapse since stock transfer
15	37	Personalisation	2 (2.4)	2 (2.4)	2 (2.8)	1 (1.2)	7	8.8	
16	38	Regeneration of Local Shopping Parades	3 (3.6)	1 (1.2)	2 (2.8)	1 (1.2)	7	8.8	Low scope for impact owing to external market forces
17	39	Taxi Ranks	2 (2.4)	2 (2.4)	1 (1.4)	2 (2.4)	7	8.6	Being addressed under the Town Centre regeneration proposals
18	40	Education Provision/Secondary School Places	2 (2.4)	2 (2.4)	1 (1.4)	2 (2.4)	7	8.6	Awaiting outcome of free school applications, Capital Programme and housing places review.
19	42	Rural Policy	2 (2.4)	2 (2.4)	1 (1.4)	2 (2.4)	7	8.6	Subject to regular monitoring through LDF processes
20	43	Joint Working – Police and Council	3 (3.6)	2 (2.4)	1 (1.4)	1 (1.2)	7	8.6	Opportunity for Member Challenge via Safer Stockton Partnership
21	44	Safety at Railway Crossings	3 (3.6)	2 (2.4)	1 (1.4)	0(0)	6	7.4	All incidents are regularly reviewed by Council Officers working with outside agencies
22	45	Review of TVU	2 (2.4)	2 (2.4)	1 (1.4)	1 (1.2)	6	7.4	Relatively new organisation – recommended for review at a later stage. An internal light touch review is underway.
23	46	Health & Social Care Bill	2 (2.4)	2 (2.4)	1 (1.4)	1 (1.2)	6	7.4	Adult Services and Health Select Committee is already overseeing the transition as part of its on-going work programme and developments will be subject of further policy updates to Members
24	47	Localism Act	2 (2.4)	2 (2.4)	1 (1.4)	1 (1.2)	6	7.4	Will be the subject of further policy updates to Members
25	48	Environmental Issues	2 (2.4)	2 (2.4)	1 (1.4)	1 (1.2)	6	7.4	
26	50	Social Marketing	2 (2.4)	2(2.4)	1 (1.4)	1 (1.2)	6	7.4	

### Potential 2012/13 Work Programme

Select Committee	Potential Topics	Topic Number	Page Number
Arts, Leisure and Culture	Marketing of Stockton's Visitor Offer	12	27
Adult Services and Health	First Topic - EIT Review of Learning Disabilities and Mental Health (Outstanding work from Year 3)	NA	NA
	Second Topic – Home Care	9	23
Children and Young People	First Topic - Quality of Childcare	3	10
	Second Topic – Child Placements and Foster Care (or NEETS)	13	31
Corporate and Social Inclusion	First Topic - Energy Supply	10	25
	Second Topic – Impact of Welfare Reform on Rental Properties	11	26
Environment	First Topic - Fuel Poverty	8	22
Housing and Community Safety	First Topic - Tobacco Control	4	16
	Second Topic – Performance of Housing Providers	14	36
Regeneration and Transport	First Topic - How the Council deals with Long-Term Empty Abandoned Properties	1	7
	Second Topic – Employability Support/ Quality of Training	7	20
Executive Scrutiny Task & Finish Review	Gated Communities	NA	NA

**SELECT COMMITTEE WORK PROGRAMME  
SUGGESTED REVIEW – PRO FORMA**

**Summary of issue you wish to be scrutinised, including key concerns and outcome for scrutinising the topic?**

How the council deals with long-term empty/abandoned properties.

There are 1000+ long-term empty properties in the borough, many of which have a serious negative impact on the safety and appearance of their neighbourhood. The council faces substantial legal and financial constraints when trying to deal with these properties. It is extremely difficult for residents to understand why the council appears powerless/slow to act when dealing with this big “quality of life” issue.

Key concerns and outcomes.

Number and location of properties – is problem getting worse.  
Why does the problem arise – case histories. Possible need for early intervention when property-owner gets into difficulties. Attitude of mortgage lenders.

Managing the problem. Inspection routine – liaison between housing, Env. Health and planning enforcement. “Worst condition first” or length of non-occupancy. When is a house deemed no longer empty.

Resources and legal framework. What we can and can’t do. Need for extra resources, innovative approach to re-use of properties. Lobby for extra powers/changes in law to tackle problem.

Outcomes

Better public understanding of issue  
Change in mindset/practices among lenders  
More co-ordinated approach by council services  
Earlier intervention  
More-informed choices for people entering buy-to-let market  
Pilot schemes to bring homes into use

NOTE: ENTRIES BELOW RELATE TO ISSUE CATEGORIES OF THE PICK PROCESS.  
PLEASE REFER TO THE EXPLANATION NOTES TO THIS FORM FOR FURTHER INFORMATION.

**Public interest justification:**

Empty properties can blight neighbourhoods, contribute to housing shortage, can be magnet for crime and ASB

**Impact on the social, economic and environmental well-being of the area:**

Improved housing stock, safer neighbourhoods, tackling financial hardship

**Council performance and efficiency in this area (including organisation development) if known:**

Greater scope for inter-service working

**Keep in Context (are other reviews taking place in this area?):**

Don't know

**Signed:** Cllr Michael Clark

**Date:** November 2011



**SELECT COMMITTEE WORK PROGRAMME  
SUGGESTED REVIEW – PRO FORMA**

**Summary of issue you wish to be scrutinised, including key concerns and outcome for scrutinising the topic?**

Child Placements & Foster Care

NOTE: ENTRIES BELOW RELATE TO ISSUE CATEGORIES OF THE PICK PROCESS.  
PLEASE REFER TO THE EXPLANATION NOTES TO THIS FORM FOR FURTHER  
INFORMATION.

**Public interest justification:**

**Impact on the social, economic and environmental well-being of the area:**

**Council performance and efficiency in this area (including organisation development) if known:**

**Keep in Context (are other reviews taking place in this area?):**

**Signed:** CESC

**Date:** December 2011

**SELECT COMMITTEE WORK PROGRAMME  
SUGGESTED REVIEW – PRO FORMA**

**Summary of issue you wish to be scrutinised, including key concerns and outcome for scrutinising the topic?**

The Quality of Childcare in Stockton-on-Tees

Childcare plays a crucial role in the lives of most families. It enables parents to go out to work to contribute to a decent family income when they have very young children. A growing body of evidence shows that good pre-school childcare gives children a flying start and leads to better outcomes as they move through school.

The Childcare Act 2006 enshrines in law parents' legitimate expectation of accessible, high quality childcare and services for children under five and their families. The Act also confirms the vital role of local authorities as strategic leaders, working in partnership across all sectors to shape the future provision of childcare, raising quality of services and improving outcomes for all children.

What this means for parents, whatever their background is the certainty of knowing that high quality local services will be provided to support them and their children in ways that best suit their needs.

Measures in the Act formalise the important strategic role local authorities play through a set of duties, which are as follows:

**Section 6 - Duty to secure sufficient, high quality childcare for working parents** – The local authority must secure, as far as is reasonably practicable, that the provision of childcare is sufficient to meet the requirements of parents in their area who require childcare (for children 0 – 14 years, 18 with a disability) in order to enable them:

- to take up, or remain in, work;
- to undertake education or training which could be reasonably be expected to assist them to obtain work.

**Section 7 – Duty to secure prescribed early years provision free of charge** - The local authority must secure that early years provision of a prescribed description is available free of charge for such periods as may be prescribed for each young child in their area. (Currently 570 hours per annum for 3 & 4 year olds, 570 hours for disadvantaged 2 year olds by 2013.) The Code of Practice for local authorities on delivery of free early years provision for 3 & 4 year olds states:

- Local authorities must ensure that children are able to access their free entitlement for up to 2 years before they reach compulsory school age. Local authorities are legally required to secure sufficient, free early years provision for every eligible child.
- Local authorities are legally required to secure and improve quality of all early years' providers.
- Local authorities must ensure that all eligible children can access the free entitlement through early years providers who are Ofsted registered (or schools providing early years provision which are exempt from registration).

Local authorities must ensure they meet their duties under equality legislation to promote equality for disabled children and should ensure settings are aware of their responsibilities in promoting equality of opportunity and legal duties do not discriminate against disabled children.

**Section 11 – Duty to assess childcare provision** - An English local authority must prepare assessments of the sufficiency of the provision of childcare in their area. Assessments must be prepared at intervals not exceeding three years. The authority must keep a childcare assessment under review until superseded and have regard to any guidance from the

Secretary of State.

**Note:** The Government is currently consulting on proposals for local authorities to report annually to parents and elected Members on the state of the childcare market in their area. This would include an assessment of provision for disabled children.

**Section 13 – Duty to provide information, advice and training to childcare providers –**

The local authority must, in accordance with regulations, secure the provision of information, advice and training to:

- persons providing childcare in their area who are registered;
- persons who intend to provide childcare in their area in respect of which they will be required to register;
- support the economic sustainability of providers, including business planning, financial management and marketing;
- support providers in meeting the requirements of the Early Years Foundation Stage (EYFS) statutory assessment;
- support all childcare providers which have been deemed inadequate by Ofsted;
- support childcare providers in complying with statutory requirements and national guidance on child protection/safeguarding approved by the LSCB.

As part of securing sufficient high quality childcare and meeting their duty under section 13, local authorities are required to support providers in satisfying the registration and regulatory requirements as part of the Act.

Local authorities have an important role to commission and secure sustainable, high quality childcare across different sectors. But in order to do that effectively, all authorities are required to have a good understanding of current and future demand and supply in their locality, and how to match them.

Understanding demand involves assessing parents' needs, covering issues such as affordability, location, opening times, the particular needs of black and minority ethnic groups, and children with a disability or special educational needs. It also means assessing employers' current and likely demand for childcare, depending on workforce composition and work patterns, as well as socio-economic and demographic mapping to identify how many and where places are likely to be needed.

Understanding supply involves assessing current and future vacancies and location of supply in the maintained, private, voluntary and independent sectors including childminders, unit costs, the sustainability and quality of places across sectors, and current and future workforce supply and skills.

**Quality of provision**

Research shows that high quality early learning and childcare helps children to do better in school, with the effects lasting to at least age 10. This improves their social and cognitive abilities and helps to identify learning and developmental needs early, thus reducing the risk of long-term underachievement and disaffection. However, these benefits are only associated with high quality - poor quality adds no value in the long term.

Raising and sustaining the quality of early years and childcare provision is therefore crucial to achieving the Local Authority's long term ambition for children.

In order to develop the quality of provision, a decision was taken at the Children's Trust Management Team to produce a Stockton-on-Tees Borough Council endorsed quality improvement programme for providers of childcare. A toolkit has been produced providing questions to challenge and support providers in reflective practice, self evaluation preparation and completion. The toolkit also provides an agreed process, including descriptors for self evaluation, for an annual conversation with the local authority.

The aim of the quality improvement programme, “A Journey to Outstanding” process is to:

- be provider focussed;
- involve providers in the on-going development process in order to promote ownership;
- support all providers to implement strategies for continuous improvement;
- clearly take into account the Early Years Foundation Stage (EYFS);
- promote reflective practice;
- provide settings with support and challenge;
- provide a method of monitoring quality in settings;
- use the Ofsted Self Evaluation Form to contribute to the inspection process;
- bring together strategies for monitoring and evaluation in order to prevent duplication;
- inform the childcare sufficiency agenda;
- enable the local authority to plan, resource and support requirements; and to
- support and provide a structure for an annual conversation between the provider and the relevant local authority officer.

The introduction of the Stockton-on-Tees ‘A Journey to Outstanding’ programme will enable the Authority to have a clear understanding of the quality of provision across the borough. The Programme will ensure that the correct support and challenge is offered to settings thereby enabling them to improve their inspection outcomes. An ‘annual conversation’ between the setting and an appropriate Local Authority Officer will underpin the quality improvement process. Currently 47 childcare settings and 13 Network Childminders have signed up to the Programme.

NOTE: ENTRIES BELOW RELATE TO ISSUE CATEGORIES OF THE PICK PROCESS.  
PLEASE REFER TO THE EXPLANATION NOTES TO THIS FORM FOR FURTHER INFORMATION.

**Public interest justification:**

The latest Childcare Sufficiency Assessment determined that there are the following number of childcare places available within Stockton-on-Tees:

**Registered childcare places (0-7 years)**

Type of provision	Number of places
Childminding	1,125
Crèche	207
Day Nursery	1,569
Out of School care	646
Pre-school/playgroup	451
Nursery Unit independent school	117
Nursery class maintained school	3,220
<b>Total</b>	<b>7,335</b>

**Gaps analysis:** The Assessment identified the following gaps in provision:

**Geographical gaps** – There are gaps in provision in Billingham, Ingleby Barwick and Fairfield/Grange field.

**Income gaps** – Low income areas have the lowest take of the Working Tax Credit childcare element.

**Specific Needs gaps** – Holiday and out of school provision for disabled children and children with additional needs and the availability of culturally appropriate childcare for families from BME backgrounds.

**Time gaps** – Unmet demand for childcare from 5.30 to 6.00 pm weekday evenings. There is also a mis-match in week day supply and evening/weekend shift working.

**Age gaps** – Insufficient provision for disadvantaged 2 year olds, after school and holiday care for children aged 5 – 10 years and a lack of appropriate provision for children over 11 years, particularly those with a disability.

#### **Impact on the social, economic and environmental well-being of the area:**

Section 6 of the Childcare Act 2006 gives local authorities the statutory duty to secure, as far as is reasonably practicable, that the provision of childcare is sufficient to meet the requirements of parents in their area who require childcare (for children 0 – 14 years, 18 with a disability) in order to enable them:

- to take up, or remain in, work;
- to undertake education or training which could be reasonably be expected to assist them to obtain work.

The Government stipulates that the definition of ‘sufficiency’ refers to high quality provision.

The availability of childcare underpins the ability of families with young children to access and remain in work.

#### **Council performance and efficiency in this area (including organisation development) if known:**

The following table demonstrates the current inspection outcomes for childcare for the period September 2008 to June 2011 as reported by Ofsted. The table shows comparisons between Stockton-on-Tees, the North East and England.

#### **Ofsted inspection ratings – September 2008 to June 2011.**

	<b>Stockton-on-Tees June 2010</b>	<b>Stockton-on-Tees June 2011</b>	<b>North East June 2011</b>	<b>National June 2011</b>
<b>Childminders – inspection rating</b>				
Outstanding	6%	10%	10%	10%
Good	48%	51%	54%	59%
Satisfactory	44%	38%	34%	29%
Inadequate	3%	1%	2%	1%
<b>Childcare – non domestic premises</b>				
Outstanding	0%	3%	7%	12%
Good	62%	64%	63%	63%
Satisfactory	38%	33%	29%	23%
Inadequate	0%	0%	1%	1%

Further analysis has been undertaken to assess the inspection rates currently being achieved by settings and childminders since April 2011 and this information is recorded in the following table:

#### **Stockton-on-Tees Ofsted inspection ratings – April 2011 to September 2011.**

	<b>Number of settings/childminders</b>	<b>%</b>

<b>Settings</b>		
Outstanding	1	14%
Good	4	57%
Satisfactory	2	29%
Inadequate	0	0
<i>Total percentage good or outstanding</i>		<b>71%</b>
<b>Childminders</b>		
Outstanding	2	18%
Good	7	64%
Satisfactory	2	18%
Inadequate	0	0
<i>Total percentage good or outstanding</i>		<b>82%</b>

The figures reflect an increase in the number of inspections achieving a good or outstanding rating.

In Stockton-on-Tees there has been an improvement in the percentage of childminders and childcare settings achieving good or outstanding at their inspection over the last year. However, there are still some improvements to be made if the Borough is to match the ratings achieved both in the North East and England as a whole.

The implementation of 'A Journey to Outstanding' will provide an evidence based method of supporting improvement within the childcare market.

#### **Keep in Context (are other reviews taking place in this area?):**

As part of the Government's commitment to supporting families in the foundation years, there are proposed changes to the entitlement to free early education and childcare sufficiency. There is currently a consultation process underway which is due to finish in February 2012. The Government has given its commitment to high quality early years provision and Ministers are committed to:

- introducing a reformed Early Years Foundation Stage by 2012;
- maintaining universal free early education for 3 and 4 year olds;
- offering free early education to all disadvantaged 2 year olds, by 2013;
- strengthening the quality criteria for providers of the free entitlement; and,
- reforming local authority sufficiency duties.

**Quality of free early education** – the quality of early education provision is a key driver of children's later attainment and the Government wants to be clear about the expectation that free early education should be of a sufficient quality.

The consultation proposes that local authorities should:

- not fund providers rated inadequate;
- fund providers rated satisfactory, providing one or more of these additional eligibility criteria is met:
  - internal local authority quality assurance systems;
  - participation in a recognised quality improvement programme;
  - membership of a peer-support network; and
  - workforce qualifications;
  - consideration needs to be given whether those rated satisfactory should meet additional criteria and whether those rated good should meet one or more of the criteria.
- Fund providers rated good or outstanding by Ofsted. The local authority can reconsider if the quality of provision has deteriorated significantly since their last inspection, or if the

local authority has placed additional requirements on providers rated good in their area.

Currently within Stockton-on-Tees all private, voluntary and independent providers of the free entitlement for 2, 3 and 4 year olds are required to sign up to the Local Authority's terms and conditions, which include the expectation that they will take part in the 'A Journey to Outstanding' quality improvement programme. All of those settings have signed up to take part in the process.

**Signed:** CESC

**Date:** December 2011

**SELECT COMMITTEE WORK PROGRAMME 2011/12  
SUGGESTED REVIEW – PRO FORMA**

**Summary of issue you wish to be scrutinised, including key concerns and outcome for scrutinising the topic?**

Tobacco Control

Smoking remains the single preventable cause of premature death in the UK today. Around half of long-term smokers will eventually die as a result and approximately 15 people a day die in the North East alone. Stockton is significantly higher than the national average for the number of smoke related deaths each year.

The scope of the review to include:

1. The Demand for Tobacco:  
To include a major focus on young people  
Measures to help people stop smoking particularly from within the workplace environment.
2. The Supply of Tobacco:  
To include enforcement measures against illegal trading in tobacco;  
under-age sales and the sales of smuggled and counterfeit cigarettes
3. The Protection of Non Smoker's to Second Hand Smoke:  
Measures to protect people from the dangers of second hand tobacco smoke

NOTE: ENTRIES BELOW RELATE TO ISSUE CATEGORIES OF THE PICK PROCESS.  
PLEASE REFER TO THE EXPLANATION NOTES TO THIS FORM FOR FURTHER INFORMATION.

**Public interest justification:**

Smoking and tobacco has a massive impact on health overall, particularly health inequalities. It is also a great drain on the costs of the NHS locally. The review will impact on the health and well being for many residents and tobacco control forms a crucial component in efforts to improve public health.

**Impact on the social, economic and environmental well-being of the area:**

The review will consider a key health area which is the largest single behavioural factor contributing to health inequalities within the Borough.

**Council performance and efficiency in this area (including organisation development) if known:**

There is currently a partnership Tobacco Alliance – “Smoke Free Stockton” which has developed an annual tobacco control action plan.

As part of the proposed changes to Public Health, smoking and tobacco control will move from NHS control and oversight to the Local Authority. This review will offer an opportunity to review the current and future issues for this area.

**Keep in Context (are other reviews taking place in this area?):**

**Signed:** Ruth Hill

**Date:** December 2011



**SELECT COMMITTEE WORK PROGRAMME  
SUGGESTED REVIEW – PRO FORMA**

**Summary of issue you wish to be scrutinised, including key concerns and outcome for scrutinising the topic?**

Review of Prosthetics

The design, development and fitting of prosthetics for amputees in Stockton is commissioned by James Cook University Hospital to Otto Vock Prosthetics. There does not appear to be a UK centre of excellence where Otto Vock can seek advice or where patients can seek alternative advice and support.

An informal complaint has been received that the service is exceedingly slow, old fashioned, lacking in professionalism and of poor standard. This mirrors a complaint made several years ago, suggesting that the service has not improved.

A review of this service would include:

- Length of time individuals wait for a prosthetic
- Quality and fit of prosthetics
- Advice given to those being fitted for a prosthetic
- Best practice in other areas/countries

NOTE: ENTRIES BELOW RELATE TO ISSUE CATEGORIES OF THE PICK PROCESS. PLEASE REFER TO THE EXPLANATION NOTES TO THIS FORM FOR FURTHER INFORMATION.

**Public interest justification:**

The length of time an individual has to wait for and the quality of a prosthetic will impact on the individual's day to day life.

**Impact on the social, economic and environmental well-being of the area:**

**Council performance and efficiency in this area (including organisation development) if known:**

N/A

**Keep in Context (are other reviews taking place in this area?):**

**Signed:** Cllr Norma Wilburn

**Date:** December 2011

**SELECT COMMITTEE WORK PROGRAMME  
SUGGESTED REVIEW – PRO FORMA**

**Summary of issue you wish to be scrutinised, including key concerns and outcome for scrutinising the topic?**

Effectiveness of drug treatment programmes

There is a perception that the numbers of people on drug treatment programmes have remained stable over the last few years. Work should be undertaken in order to understand the effectiveness of such work and whether the numbers include many people who have been in such programmes for a number of years, or whether people who have left are being regularly replaced and there is no overall reduction in drug use.

NOTE: ENTRIES BELOW RELATE TO ISSUE CATEGORIES OF THE PICK PROCESS. PLEASE REFER TO THE EXPLANATION NOTES TO THIS FORM FOR FURTHER INFORMATION.

**Public interest justification:**

Drug use can have a devastating effect upon individuals and the wider community, and is of concern to my constituents.

Tackling the issue can help with reducing the fear and incidence of crime, alongside improving health outcomes for users and their families.

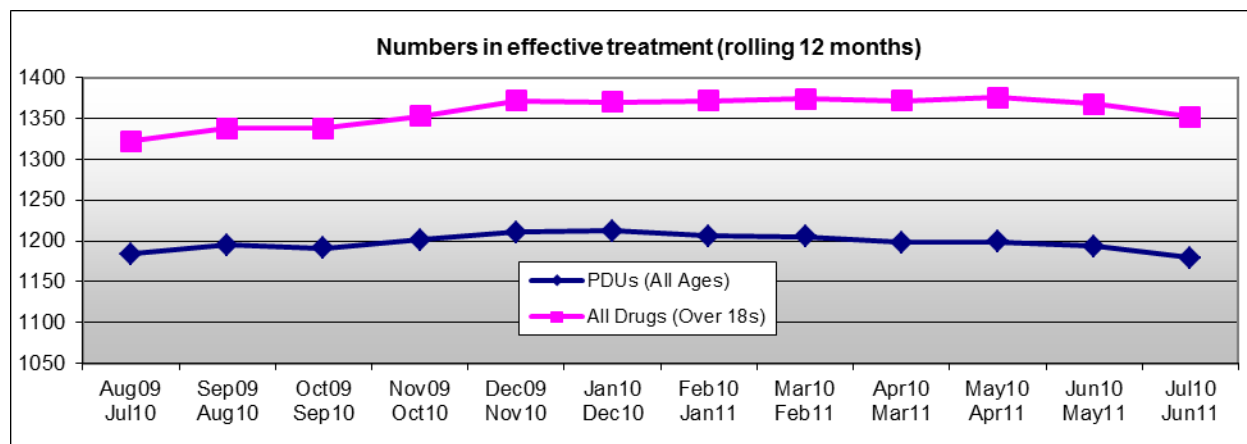
**Impact on the social, economic and environmental well-being of the area:**

Reduced numbers of people on drugs, or diverted from them, leads to better health outcomes for individuals, and improves community wellbeing in relation to a range of factors including health, community safety, and employability.

**Council performance and efficiency in this area (including organisation development) if known:**

The Drug and Alcohol Action Team has merged with the Safer Stockton Partnership in order to share information and pool resources, and co-ordinate police action if needed.

Quarterly reports are submitted to the Partnership in relation to drug treatment programmes. The headline information for Q2 2010-11 is as follows:



Effective treatment is defined as that lasting longer than for 12 weeks.

Over a 12 month rolling period, as of June 2011, there had been 1352 users in effective treatment, and of those 1179 were Problematic Drug Users (users of opiates and/or crack cocaine).

Based on the rolling 12 month period, as of June, there had been 402 new entries into effective treatment.

By Q2 in the 2011-12 year to date, there had been 131 exits from treatment of which 50% had been planned discharges.

**Keep in Context (are other reviews taking place in this area?):**

Following changes to national policy, from April 2013 drug treatment will move to payment by results, and payments will be based on factors including reduced offending, leaving treatment in a planned way, and not returning to treatment for a certain period.

[The DAAT's Performance and Data Manager has left post and a recruitment process is in ongoing. It would be beneficial to the review (if chosen) if it began when the new member of staff was settled in post – approx. 5 months time.]

**Signed:** Cllr Mohammed Javed

**Date:** November 2011

**SELECT COMMITTEE WORK PROGRAMME 2011/12  
SUGGESTED REVIEW – PRO FORMA**

**Summary of issue you wish to be scrutinised, including key concerns and outcome for scrutinising the topic?**

Evaluation of the effectiveness of employability support currently provided through the Government Schemes 'Work Programme' along with a comparison of previous provision under the Councils Communities fund scheme.

Concern as to whether the current schemes are effective at building on the three year provisions and results achieved by the Councils Communities Fund.

Provide best practice examples on which to build for local Programme Provider.

**NOTE: ENTRIES BELOW RELATE TO ISSUE CATEGORIES OF THE PICK PROCESS.  
PLEASE REFER TO THE EXPLANATION NOTES TO THIS FORM FOR FURTHER  
INFORMATION.**

**Public interest justification:**

In terms of rising unemployment it is important to those seeking work that effective and appropriate provision of support is provided.

**Impact on the social, economic and environmental well-being of the area:**

Employment supports not only the economic wellbeing of those directly benefitting, as well as their families, but is also accepted as benefitting health and social inclusion.

**Council performance and efficiency in this area (including organisation development) if known:**

Employment and employability are key areas of performance for the Council and its partners through the Community Strategy. In the current economic climate, it is important that local people are appropriately skilled and supported to access these jobs that are available, particularly as the Councils ability to provide direct support is affected with the removal of working neighbourhood funding.

**Keep in Context (are other reviews taking place in this area?):**

The most recent review was that undertaken by Audit Commission in the work and skills inspection in 2010/2011 (carried out in April 2010), finally published in Sept 2010. Previous to that the Regeneration and Transport Select Committee Scrutiny Review in 2007/2008 with the final report being published in 2007. Since that time, the Communities Fund (through Contractors) has been delivered. The new Work Programme has been launched under the coalition Government and the economic climate has worsened.

**Signed:** DNS

**Date:** November 2011

**SELECT COMMITTEE WORK PROGRAMME  
SUGGESTED REVIEW – PRO FORMA**

**Summary of issue you wish to be scrutinised, including key concerns and outcome for scrutinising the topic?**

Quality of Training Provision

Look at the quality provision of training offered in Stockton in line with the Woolfe Report. This report clearly states that all training offered should link directly into employment and training should no longer be offered if it does not directly lead to job offers and prospects. It also identified that a lot of the training offered throughout the country was not of a high enough standard to lead to employment. Stockton is a deprived region with high unemployment and training needs to be focused on directly reducing this.

NOTE: ENTRIES BELOW RELATE TO ISSUE CATEGORIES OF THE PICK PROCESS. PLEASE REFER TO THE EXPLANATION NOTES TO THIS FORM FOR FURTHER INFORMATION.

**Public interest justification:**

**Impact on the social, economic and environmental well-being of the area:**

**Council performance and efficiency in this area (including organisation development) if known:**

**Keep in Context (are other reviews taking place in this area?):**

**Signed:** Member of the Public

**Date:** November 2011

**SELECT COMMITTEE WORK PROGRAMME 2011/12  
SUGGESTED REVIEW – PRO FORMA**

**Summary of issue you wish to be scrutinised, including key concerns and outcome for scrutinising the topic?**

Fuel Poverty

How the Authority tackles fuel poverty within the Borough.

Key concerns:-

- Rising Fuel Costs
- Increase in population claiming benefits
- Possible uncoordinated approach of various areas within the Authority.

Outcomes:-

- Plan for Authority to deliver affordable energy to the community.
- Identify lead area to drive initiatives and strategy forward.

NOTE: ENTRIES BELOW RELATE TO ISSUE CATEGORIES OF THE PICK PROCESS.  
PLEASE REFER TO THE EXPLANATION NOTES TO THIS FORM FOR FURTHER  
INFORMATION.

**Public interest justification:**

Significant and growing numbers of people within the Borough are becoming affected by fuel poverty.

**Impact on the social, economic and environmental well-being of the area:**

High numbers of households in the Borough are affected. Increase in affordability of fuel may result in cash being spent elsewhere which could support local economy.  
Net reduction in carbon emissions as fuel is used more efficiently.

**Council performance and efficiency in this area (including organisation development) if known:**

Improved coordination needed as performance can be affected by Government agenda and funding.

**Keep in Context (are other reviews taking place in this area?):**

Nothing similar taking place currently.

National 'Warm Front' grant is to be abolished in 2012 and replaced with 'Green deal' loan scheme.

**Signed:** DNS

**Date:** December 2011

SELECT COMMITTEE WORK PROGRAMME  
SUGGESTED REVIEW – PRO FORMA

**Summary of issue you wish to be scrutinised, including key concerns and outcome for scrutinising the topic?**

Quality of home care services

The Committee would like to explore the issue of the quality of care provided through adult social care providers.

The Committee in particular have raised the issue of quality of home care arrangements in the Borough (across all providers). Members are keen to investigate the quality of care provided, time spent with clients, and client feedback. It is also important to ensure that individual needs are being addressed (for example deaf clients) and that commissioned services are not one size fits all.

The Committee is keen to ensure that reduced cost does not lead to compromised quality.

The mechanism for addressing concerns raised by clients, or through other sources, should be examined. This should also include how such issues are reported (including to Members), and what feedback arrangements are in place.

NOTE: ENTRIES BELOW RELATE TO ISSUE CATEGORIES OF THE PICK PROCESS.  
PLEASE REFER TO THE EXPLANATION NOTES TO THIS FORM FOR FURTHER INFORMATION.

**Public interest justification:**

Quality of adult social care is a high profile issue. Quality and dignity issues in general have been the subject of recent media coverage (for example Winterbourne View).

Home care in particular is also of interest to several external organisations (see below).

**Impact on the social, economic and environmental well-being of the area:**

High quality adult care services are essential to health and wellbeing of many in the local population.

In many cases home care providers may represent the only form of social contact for clients. It is also important that clients and the Council receive value for money and quality assurance from the services it commissions.

**Council performance and efficiency in this area (including organisation development) if known:**

The Council uses the Quality Standards Framework in order to monitor quality, and links to Adult Safeguarding procedures.

**Keep in Context (are other reviews taking place in this area?):**

A national thematic review of home care has been launched by the Care Quality Commission. This will cover 250 providers and will start in April 2012. This follows a

report published by the Equality and Human Rights Commission which raised concerns about the quality and commissioning of home care provision. A local review would be a source of information for the national CQC work.

Stockton LINK are in the process of completing a report on its own review of local domiciliary care provision. This report is due to be available mid-December. The work includes a survey of providers to determine their induction, training and supervision arrangements. A number of providers have not responded. [Further update on this to follow.]

**Signed:** Adult Services and Health Select Committee      **Date:** 28 November 2011



**SELECT COMMITTEE WORK PROGRAMME 2011/12  
SUGGESTED REVIEW – PRO FORMA**

**Summary of issue you wish to be scrutinised, including key concerns and outcome for scrutinising the topic?**

**Energy Supply**

How the Authority can source the supply of gas, electricity and fuel for fleet vehicles.

Key concerns:-

- Rising Costs
- Unpredictability of prices

(20% increase in electricity cost results in £250K increase in street lighting)

Outcomes:-

- Achieve cost savings
- Price stability (medium and long term)
- Potential to generate own energy

NOTE: ENTRIES BELOW RELATE TO ISSUE CATEGORIES OF THE PICK PROCESS.  
PLEASE REFER TO THE EXPLANATION NOTES TO THIS FORM FOR FURTHER INFORMATION.

**Public interest justification:**

Any lessons learned by Authority can be passed to local businesses and perhaps the wider community.

**Impact on the social, economic and environmental well-being of the area:**

Potential for local businesses to benefit from lessons learned. Cash savings may be utilised to provide other services or enhance current services.

**Council performance and efficiency in this area (including organisation development) if known:**

Current practice means that we secure energy via NEPO arrangements. Although NEPO does secure best price there is limited opportunity at the moment to generate or produce own energy.

There are currently no performance measures in place.

**Keep in Context (are other reviews taking place in this area?):**

Carbon management review in 2010 looked at efficient use of energy but didn't tackle supplies or potential to self generate energy.

**Signed:** DNS

**Date:** November 2011

**SELECT COMMITTEE WORK PROGRAMME  
SUGGESTED REVIEW – PRO FORMA**

<p><b>Summary of issue you wish to be scrutinised, including key concerns and outcome for scrutinising the topic?</b></p> <p><b>Impact of Welfare Reforms on Rental Properties</b></p> <p>Changes to welfare benefits may impact on residents' ability to remain in their homes. The Committee want to ensure that actions are taken to ensure occupancy retention is maintained and examine Tristar's ability to deal with welfare changes.</p>	
<p>NOTE: ENTRIES BELOW RELATE TO ISSUE CATEGORIES OF THE PICK PROCESS. PLEASE REFER TO THE EXPLANATION NOTES TO THIS FORM FOR FURTHER INFORMATION.</p>	
<p><b>Public interest justification:</b></p> <p>This issue will have direct impact on those affected by the reforms.</p>	
<p><b>Impact on the social, economic and environmental well-being of the area:</b></p> <p>This issue will have an impact on the social and economic well-being of the area.</p>	
<p><b>Council performance and efficiency in this area (including organisation development) if known:</b></p> <p>Not known</p>	
<p><b>Keep in Context (are other reviews taking place in this area?):</b></p> <p>Not known</p>	
<p><b>Signed:</b>     Housing and Community Safety</p>	<p><b>Date:</b> December 2011</p>

**SELECT COMMITTEE WORK PROGRAMME  
SUGGESTED REVIEW – PRO FORMA**

**Summary of issue you wish to be scrutinised, including key concerns and outcome for scrutinising the topic?**

Visitor economy

Review could include:

Is there a large enough/viable visitor economy (day visitors, overnight and business tourism – though I am suggesting focus on day visitors?)

- strategy
- placemaking and positioning
- tourism marketing
- strategic links (eg with Durham, North Yorks not just Tees Valley) and joined-up marketing
- rural tourism
- active tourism (sports, Tees-based, countryside/Green offer, inc Rural Tourism)
- accommodation stock (plans to improve, is there need)
- day visitor strategy
- strategic links to Festivals programme

NOTE: ENTRIES BELOW RELATE TO ISSUE CATEGORIES OF THE PICK PROCESS. PLEASE REFER TO THE EXPLANATION NOTES TO THIS FORM FOR FURTHER INFORMATION.

**Public interest justification:**

Economic development

**Impact on the social, economic and environmental well-being of the area:**

Ensuring a vibrant visitor economy in Stockton will improve the borough's overall economy, by increasing footfall for a variety of businesses and creating opportunities for new businesses.

**Council performance and efficiency in this area (including organisation development) if known:**

**Keep in Context (are other reviews taking place in this area?):**

Links to Festival strategy / programme

**Signed:** Cllr David Rose

**Date:** 30/11/11

**SELECT COMMITTEE WORK PROGRAMME  
SUGGESTED REVIEW – PRO FORMA**

**Summary of issue you wish to be scrutinised, including key concerns and outcome for scrutinising the topic?**

Festival programme

Measuring and maximising economic impact of Festivals Programme

Evaluating effective marketing (outside of Borough) and impact on visitor economy (leisure days visitors)

NOTE: ENTRIES BELOW RELATE TO ISSUE CATEGORIES OF THE PICK PROCESS.  
PLEASE REFER TO THE EXPLANATION NOTES TO THIS FORM FOR FURTHER INFORMATION.

**Public interest justification:**

There is regular public questioning (eg doorsteps, residents' association meetings) on SBC spend on SIRF, Stockton Weekender and other festivals.

**Impact on the social, economic and environmental well-being of the area:**

I believe the Festival programme is a major differentiator and aligned to cultural-led economic regeneration of Stockton High Street in particular.

Given the number and breadth of Festivals, works should be done to baseline attendances and measure economic impact.

The key indicators for success could include inbound leisure tourism (Day visitors but also overnight) and their additional spend and perceptions (eg 'return and recommend').

The study would consider effectiveness of consumer marketing techniques and appropriate budget/resource focus on 'community/resident promotion (eg in-town and local press advertising, refuse vehicle sides) versus wider consumer tourism marketing, inc:

- ROI in terms of segmented visitor numbers (residents v visitors)
- Effectiveness of reach/awareness outside Stockton
- Geographical targeting
- Partnership marketing work with VB, regional partners etc

Further work could be undertaken on looking at how aligned the Festivals Programme is with wider visitor economy strategies. (Eg why was local TV advertising commissioned for the Xmas market? What is ROI versus other visitor offers?)

An aim would be to help focus marketing/audience segmentation and development work, looking at which festivals have/could have most economic value-added impact and thus focussing resources more appropriately.

**Council performance and efficiency in this area (including organisation development) if known:**

This is a main driver for the review.

The recent Festivals 2011 report presented to Cabinet did not include visitor numbers (estimates), even for a major ticketed event! (Stockton Weekender).

We need to evaluate impact and success more rigorously, even if with just basic measures (outside of customer satisfaction) in terms of visitor/audience profile, numbers, additional/ancillary spend, place perception/OTS reach, effectiveness of marketing communications strategy/campaigns and spend

**Keep in Context (are other reviews taking place in this area?):**

EIT review – I believe this is focussing on infrastructure costs not impact/value.

**Signed:** Cllr David Rose

**Date:** November 2011

**SELECT COMMITTEE WORK PROGRAMME  
SUGGESTED REVIEW – PRO FORMA**

**Summary of issue you wish to be scrutinised, including key concerns and outcome for scrutinising the topic?**

Railway Heritage

As home of the world's first passenger railway, Stockton has a direct link to the history of railways.

It is proposed that a review is carried out to evaluate how the town is promoting its heritage and explore further ways to maximise this.

NOTE: ENTRIES BELOW RELATE TO ISSUE CATEGORIES OF THE PICK PROCESS.  
PLEASE REFER TO THE EXPLANATION NOTES TO THIS FORM FOR FURTHER INFORMATION.

**Public interest justification:**

Creating a sense of community pride in the area by promoting the historical importance of the town.

**Impact on the social, economic and environmental well-being of the area:**

Capitalising on the Stockton's railway heritage could attract more visitors to the Borough and thereby have a positive effect on the local tourism economy.

**Council performance and efficiency in this area (including organisation development) if known:**

**Keep in Context (are other reviews taking place in this area?):**

Discussed during Regeneration & Transport Select Committees EIT review of Events, Arts & Tourism, and raised at focus groups held as part of this review, however no specific recommendations regarding railway heritage were made.

**Signed:** Arts Leisure & Culture Select Committee

**Date:** December 2011

**SELECT COMMITTEE WORK PROGRAMME  
SUGGESTED REVIEW – PRO FORMA**

**Summary of issue you wish to be scrutinised, including key concerns and outcome for scrutinising the topic?**

Full Participation (NEETs)

The Education and Skills Act 2008, introduced “Raising the Participation age” and the key aspects of this have subsequently been retained by the Education Act 2011:

Part 1: Duty to Participate in Education or Training

Chapter 1 Establishes a duty on young people to participate:

17 by 2013

18 by 2015 (has not reached the age of 18)

In:

- full-time education, such as school, college or home education;
- work-based learning, such as an Apprenticeship;
- or part-time training, alongside working or volunteering for over 20 hours a week.

This means that the Local Authority has a duty to encourage, enable and assist young people’s participation in education and training.

The 14-19 Partnership in Stockton leads on the implementation of the full participation strategy, which is set out in the 14-19 Full Participation plan. The Partnership represents a range of key stakeholders including schools, post 16 providers, VCS organisations, Local Authority services including 14-19, Regeneration and Youth Support.

Securing young people’s engagement in post 16 education and training is crucial in terms of reducing NEETS and ensuring progression into employment pathways. One of the best defences against social exclusion is having a job, and the best way to get a job is to have a good education, with the right training and experience.

As a result of the economic recession and the significant increase in youth unemployment there is a high level of concern that the number of NEET young people in Stockton will increase. Coupled with the removal of the EMA, the reduction in support services available and changes to HE funding arrangements these are being seen by some as further risks in terms of young peoples’ engagement.

The partnership approach and collaborative model are essential to making progress on this issue and scrutiny of this topic would examine how well all partners work together and contribute to the agenda, particularly the effectiveness of the 14-19 Board and strategy.

Within this some key questions would be explored:

- How effective is the Partnership model?
- Is there appropriate emphasis on transition phases?
- How well do schools prepare young people for post 16 progression (including the changes to statutory responsibilities for Careers Guidance)?
- What impact have changes to funding arrangements had on engagement?
- What can we do to match supply (what we offer) with demand (what young people need)
- Does the Learning offer in Stockton meet the needs and aspirations of young people (examining the export of learners)?
- Are there meaningful and flexible progression pathways?
- Are the support networks available to young people effective and meeting the needs

- of all young people?
- What does quantitative and qualitative data tell us about the cohort in order to inform future planning?

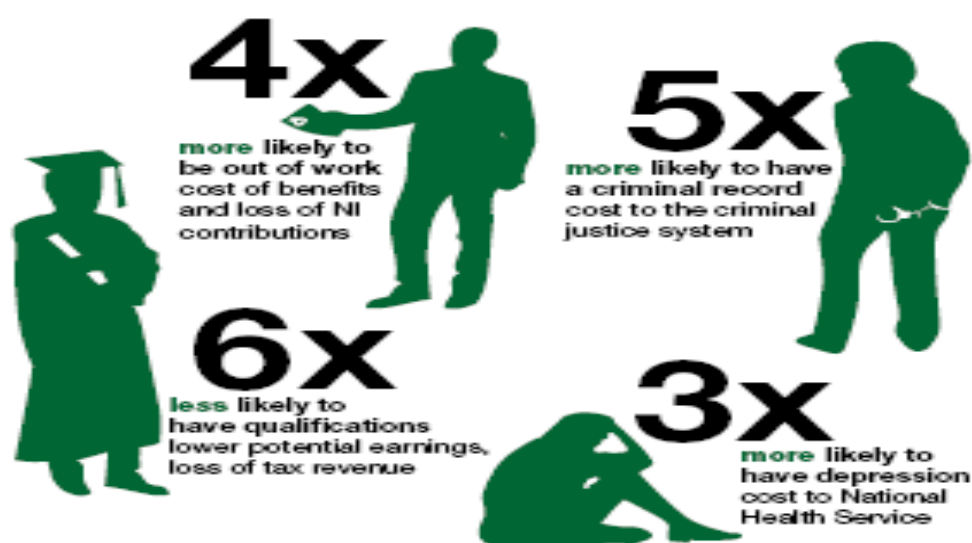
NOTE: ENTRIES BELOW RELATE TO ISSUE CATEGORIES OF THE PICK PROCESS. PLEASE REFER TO THE EXPLANATION NOTES TO THIS FORM FOR FURTHER INFORMATION.

**Public interest justification:**

Young people that are not engaged in meaningful opportunities when they leave school are more likely to suffer longer term negative outcomes. Research has shown that being NEET between the ages of 16 and 18 is a major predictor of later unemployment, low incomes, teenage motherhood, depression and poor physical health. This is a cost both in human terms but can also have a direct impact upon local communities in terms of the links between inactivity and substance misuse, anti social behaviour and crime.

An Audit Commission report in 2010 found;

Figure 3: Long-term effects of being NEET on young men



Source: 1970 British Birth Cohort, 1999<sup>1</sup>

**Impact on the social, economic and environmental well-being of the area:**

In addition to the potential poorer life chances than their peers, young people not in education, employment or training are more likely to be a long term cost to the public purse. The Audit Commission research found that a young person NEET in 2008 will cost an average of £56k in public finance costs before retirement age (e.g. costs to welfare, health and criminal justice services, and loss of tax revenue). There will also be £104k in opportunity costs (loss to the economy). The research estimated that the entire group of 2008 NEET young people could cost £13 billion to the public purse and £22 billion in opportunity costs before they reach retirement age.

Realising the potential of young people is a major factor in terms of economic regeneration and is especially important in areas of disadvantage. Latest data nationally (for July to September 2011) shows that over 1 million 16-24 year olds are unemployed (or NEET). This



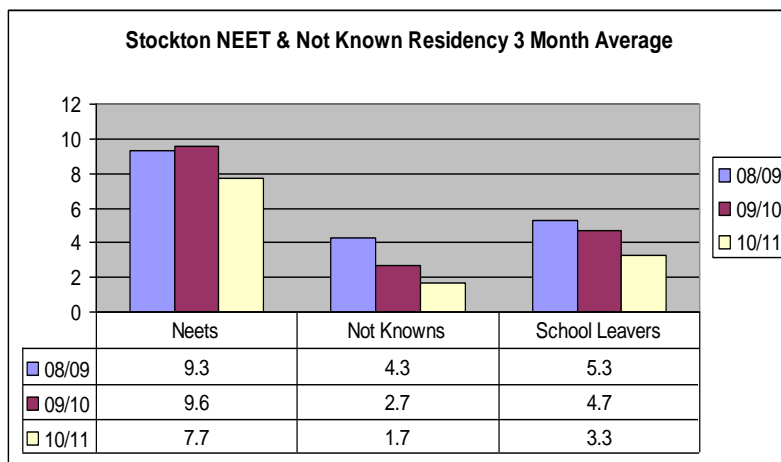
rate of 21.9% compares to an all age unemployment rate of 8.3%. This national data shows that 1 in 5 young people are unemployed nationally and this represents a significant potential waste of young people's talents and negative consequences on social and economic level for the local area.

**Council performance and efficiency in this area (including organisation development) if known:**

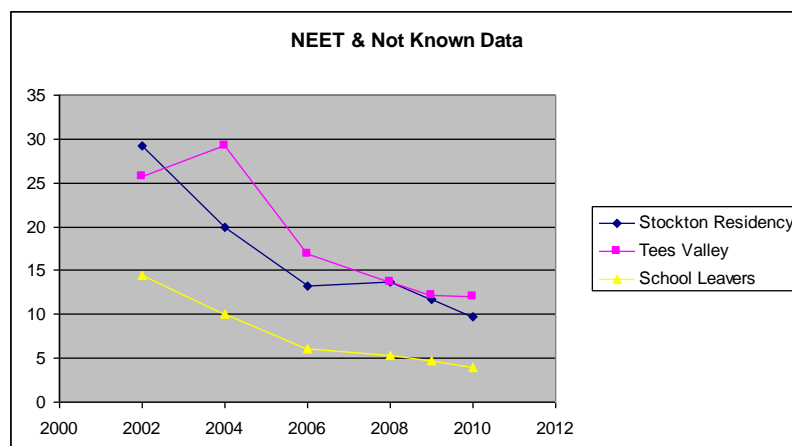
The achievement of full participation and reduction of NEETs / Youth Unemployment is a complex dimension and one which cannot be delivered by one agency or service acting alone. Whilst the Local Authority has a lead role in terms of the strategy to Raise The Participation age, progress is only made through the commitment and contribution of a wide and range of partners. Schools, colleges and other learning providers have a key role in preparing young people for transition to adult life and retaining them in learning, whilst other services support young people to make the best use of the opportunities available, including working with some of the hardest to reach young people and those with multiple barriers.

Data shows that much progress has been made since 2002 when:

- Over 29% of 16-18s in Stockton-on-Tees were NEET or Not Known. That's 2000 young people!
- 14.5% of those leaving school were NEET or No response. That's 385 school leavers not active or no longer in touch with services!



**Trend data (2002-2010)**



Although trend data is positive and much progress has been made national data on youth unemployment and local NEET data would indicate we are now looking at an increasing trend going forward and we currently have around 600 young people aged 16-18 that are NEET. In addition we have significant numbers of young people joining and leaving the NEET group every month (During October 2011,161 joined NEET and 234 left the NEET group)

**Keep in Context (are other reviews taking place in this area?):**

As noted earlier the 14-19 Board is the lead partnership in terms of working toward Full Participation. The Board has recently developed a Full Participation Strategy and Action Plan and is monitoring key actions and accountability going forward. Full Participation and reducing the number of NEET young people has been agreed as the number one priority for this group.

It is also worth noting that many of the services involved in contributing to this agenda have during 2011/12 been subject to scrutiny through the EIT reviews and in particular those funded by the Early Intervention Grant.

In addition we are continuing to see changes in terms of national policy as youth unemployment becomes high profile. Government have announced a number of schemes and initiatives in order to try and alleviate this growing concern, particularly around 18-24 years olds. This is on top of significant changes to statutory responsibilities to be enacted through the Education Act 2011:

**Schools**

- The Education Act 2011 inserts a new duty, section 42A, into Part VII of the Education Act 1997, requiring schools to secure access to independent careers guidance for pupils in years 9-11. Guidance must be presented in an impartial manner and promote the best interests of the pupils to whom it is given. Guidance should also include information on options available in respect of 16-18 education or training, including apprenticeships.

**Local Authorities**

- Local authorities will retain their duty to encourage, enable or assist young people's participation in education or training. They are also expected to have arrangements in place to ensure that 16 and 17 year olds have received an offer of a suitable place in post-16 education or training, and this will become increasingly important as the participation age is raised.
- A local authority must, under section 68[1] of the Education and Skills Act [2008] make available such services as it considers appropriate to encourage, enable or assist the effective participation of young people and relevant young adults in education or training. This covers all 13-19 year olds and those aged 20 and over but under 25 with an assessment of a learning difficulty and/or disability under section 139a of the Learning and Skills Act 2000. It also covers young people detained in custody.

Government, as with many other measures, no longer sets a national target for NEET reduction and has this year changed reported data to be based on academic age rather than actual age. This is in line with plan to introduce Key Stage 4 and 5 Destination Measures and is designed to with increase the level of accountability for schools and colleges in terms of transition and progression.

The KS4 and KS5 Destination Measures are being developed to look at the success of schools in helping their pupils to progress on to positive post-16 destinations, helping to:

- Provide clear information to parents and young people about the post-16 routes taken by a school, college or training provider's former pupils.
- Make schools and post-16 providers accountable for ensuring that all their pupils take qualifications that offer them the best opportunity to progress and receive the support needed to prepare for and complete that transition.
- Support the increased focus on disadvantaged pupils to ensure that they make a successful transition, helping to raise post-16 participation and reduce NEET.

**Signed:** CESC

**Date:** November 2011

**SELECT COMMITTEE WORK PROGRAMME  
SUGGESTED REVIEW – PRO FORMA**

**Summary of issue you wish to be scrutinised, including key concerns and outcome for scrutinising the topic?**

Performance of Registered Providers following SSVT & LSVT.

Have promises been kept as made in offer documents?  
How will current economic climate affect the promises made and what, if any changes will need to be made to the original offer?

NOTE: ENTRIES BELOW RELATE TO ISSUE CATEGORIES OF THE PICK PROCESS.  
PLEASE REFER TO THE EXPLANATION NOTES TO THIS FORM FOR FURTHER INFORMATION.

**Public interest justification:**

Tenants voted for stock transfer on basis of promises made. Need to check those promises kept. Particular concerns around those in sheltered housing who become disabled and how their needs are being met. How might changes to Supporting People funding affect services provided? How will changes to housing funding affect tenants?

**Impact on the social, economic and environmental well-being of the area:**

All tenants who were involved in stock transfer are affected. Where promises have not, or cannot be kept the council should have a role to play in formulating policies & practices to lessen the effects

**Council performance and efficiency in this area (including organisation development) if known:**

Personal knowledge of poor performance by one Registered Provider, constant complaints from residents, meetings with council officers to no avail, comment by external partner as to failings of same registered provider.  
General feeling of slipping of standards by other Registered Provider, backed up by talking to other councillors and officers.

Subject brought forward by committee meeting of Housing & Community Safety Scrutiny Committee

**Keep in Context (are other reviews taking place in this area?):**

None known

**Signed:** Cllr Julia Cherrett

**Date:** November 2011

**SELECT COMMITTEE WORK PROGRAMME  
SUGGESTED REVIEW – PRO FORMA**

**Summary of issue you wish to be scrutinised, including key concerns and outcome for scrutinising the topic?**

Individual budgets/self-directed support (Personalisation)

Proposed review of SDS/person budgets specifically (not 'broad' direct payments), evaluating:

- take-up
- success for individuals in improving their lives
- promotion/support for service users
- consider early financial implications (is the cost greater or less than traditional care package). What trends?
- impact on service users'/carers' lives,
- success across client groups (examine why OP is low?),
- internal support and progress in reshaping the workforce,
- stimulating and shaping the provider market
- Third Sector's current/future role (provider) and market readiness

NOTE: ENTRIES BELOW RELATE TO ISSUE CATEGORIES OF THE PICK PROCESS. PLEASE REFER TO THE EXPLANATION NOTES TO THIS FORM FOR FURTHER INFORMATION.

**Public interest justification:**

National policy is to offer service users more independence, choice and control over their care.

Ensuring the appropriate high quality care is received by residents.

**Impact on the social, economic and environmental well-being of the area:**

The care delivered through individual budgets will have a direct impact on the social well-being of residents.

**Council performance and efficiency in this area (including organisation development) if known:**

I am unsure from PIs reported in November whether we are significantly below targets for Self-Directed Support/Individual Budgets and/or Direct Payments.

**Keep in Context (are other reviews taking place in this area?):**

Update report on Personalisation is due to be presented to Cabinet in January.  
**This may cover many elements!**

**Signed:** Cllr David Rose

**Date:** 30/11/11

SELECT COMMITTEE WORK PROGRAMME  
SUGGESTED REVIEW – PRO FORMA

**Summary of issue you wish to be scrutinised, including key concerns and outcome for scrutinising the topic?**

Regeneration of local shopping parades

In recent years these have been subject to the economic downturn and there is a perception that they are increasingly empty and/or dominated by betting shops/takeaways.

It is proposed that work is undertaken to assess what assistance can be given to these locations in order to promote their regeneration. This could also be an opportunity for local community enterprises and the scope for this should be assessed as part of the review.

NOTE: ENTRIES BELOW RELATE TO ISSUE CATEGORIES OF THE PICK PROCESS.  
PLEASE REFER TO THE EXPLANATION NOTES TO THIS FORM FOR FURTHER INFORMATION.

**Public interest justification:**

Estate shopping parades are a focal point for the local community and provide an important service in addition to the larger supermarkets and town centres.

**Impact on the social, economic and environmental well-being of the area:**

Improvements to shopping parades would contribute to economic development, and a better physical environment.

**Council performance and efficiency in this area (including organisation development) if known:**

Not known - links to wider regeneration initiatives eg hardwick?

**Keep in Context (are other reviews taking place in this area?):**

Not known.

**Signed:** Regeneration and Transport Select Committee      **Date:** 25 November 2011

SELECT COMMITTEE WORK PROGRAMME  
SUGGESTED REVIEW – PRO FORMA

Summary of issue you wish to be scrutinised, including key concerns and outcome for scrutinising the topic?

Location of taxi ranks throughout the Borough

There is a perception that the location of taxi ranks in the Borough may need to be reviewed. Some taxi-only waiting areas have been in place for several years and they are not always next to places that are currently frequently used (eg. shops/leisure). This may allow for some to be converted into general parking spaces, with new taxi ranks being created where they are now needed.

NOTE: ENTRIES BELOW RELATE TO ISSUE CATEGORIES OF THE PICK PROCESS.  
PLEASE REFER TO THE EXPLANATION NOTES TO THIS FORM FOR FURTHER INFORMATION.

**Public interest justification:**

Better access to taxi waiting areas would increase the transport options available to local residents.

**Impact on the social, economic and environmental well-being of the area:**

Better alignment of taxi ranks with more economically active locations would benefit the development of these areas.

**Council performance and efficiency in this area (including organisation development) if known:**

Not known.

**Keep in Context (are other reviews taking place in this area?):**

The work on Stockton High Street, and the Borough-wide review of parking (scheduled for Cabinet on 8 December), has included a review of taxi ranks in key areas. There has been extensive engagement with the taxi trade as part of the work

As part of the plans for Yarm the taxi trade will again be consulted as part of that process. This will take place during 2012-13.

There may be limited scope for further work following these projects.

**Signed:** Regeneration and Transport Select Committee      **Date:** 25 November 2011

**SELECT COMMITTEE WORK PROGRAMME  
SUGGESTED REVIEW – PRO FORMA**

**Summary of issue you wish to be scrutinised, including key concerns and outcome for scrutinising the topic?**

Educational Provision for 11 – 19 year olds across the Borough

There is currently a mix of secondary schools and colleges within the borough including comprehensives, academies, technology colleges, sixth form colleges, further education colleges and a university campus. There are also applications for free schools currently in progress.

The review would seek to map the educational establishments available for 11 – 19 year olds and evaluate if these match the requirements of young people and provide the correct range of education that the borough needs.

NOTE: ENTRIES BELOW RELATE TO ISSUE CATEGORIES OF THE PICK PROCESS.  
PLEASE REFER TO THE EXPLANATION NOTES TO THIS FORM FOR FURTHER INFORMATION.

**Public interest justification:**

It is essential that a variety of school places are available to both meet the expectations and aspirations of young people and to ensure that there is the appropriate mix of skill sets in the future workforce.

**Impact on the social, economic and environmental well-being of the area:**

Ensuring that the right educational establishments are in place to provide the skills and knowledge required for the sustainability and economic development of the borough and that meet the aspirations of our young people.

**Council performance and efficiency in this area (including organisation development) if known:**

**Keep in Context (are other reviews taking place in this area?):**

A review of School Effectiveness is taking place between November 2011 – March 2012, however the focus on this review is the support teams within SBC.

**Signed:** Cllr Ken Lupton

**Date:** November 2011



**SELECT COMMITTEE WORK PROGRAMME  
SUGGESTED REVIEW – PRO FORMA**

**Summary of issue you wish to be scrutinised, including key concerns and outcome for scrutinising the topic?**

Provision of Secondary School Places

The review would seek to assess whether there are the appropriate number of secondary school places for the population of the borough, and planning for the future population.

NOTE: ENTRIES BELOW RELATE TO ISSUE CATEGORIES OF THE PICK PROCESS.  
PLEASE REFER TO THE EXPLANATION NOTES TO THIS FORM FOR FURTHER INFORMATION.

**Public interest justification:**

It is vital that there are an appropriate number of places for secondary school pupils for the population, and that these places are located in the correct areas, to ensure that young people have access to a good education.

**Impact on the social, economic and environmental well-being of the area:**

Access to a good education in the Borough will impact on the skills and knowledge of the future workforce. There is also an impact on the number of pupils travelling to different areas both within the borough and outside of the borough for their education.

**Council performance and efficiency in this area (including organisation development) if known:**

**Keep in Context (are other reviews taking place in this area?):**

A review of School Effectiveness is taking place between November 2011 – March 2012, however the focus on this review is the support teams within SBC.

**Signed:** Cllr Ross Patterson

**Date:** December 2011

**SELECT COMMITTEE WORK PROGRAMME  
SUGGESTED REVIEW – PRO FORMA**

<p><b>Summary of issue you wish to be scrutinised, including key concerns and outcome for scrutinising the topic?</b></p> <p><u>Rural Policy</u></p> <p>To give further consideration of the 'Planning the Future of Rural Villages' study and how the Local Development Framework (LDF) has impacted on rural planning.</p>	
<p>NOTE: ENTRIES BELOW RELATE TO ISSUE CATEGORIES OF THE PICK PROCESS. PLEASE REFER TO THE EXPLANATION NOTES TO THIS FORM FOR FURTHER INFORMATION.</p>	
<p><b>Public interest justification:</b></p> <p>Determining the sustainability of small settlements within the District, helping to decide where new developments, including residential, business and community, will be acceptable and the reasons for their acceptability. Also determining the appropriate provision of services and facilities, to fulfil needs.</p>	
<p><b>Impact on the social, economic and environmental well-being of the area:</b></p> <p>Planning Policy Statement 1: Delivering Sustainable Development (2005), that planning authorities should seek to “provide improved access for all to jobs, health, education, shops, leisure and community facilities, open space sport and recreation, by ensuring that new development is located where everyone can access services and facilities on foot, bicycle or public transport rather than having to rely on access by car, whilst recognising that this may be more difficult in rural areas”.</p>	
<p><b>Council performance and efficiency in this area (including organisation development) if known:</b></p> <p>Not known</p>	
<p><b>Keep in Context (are other reviews taking place in this area?):</b></p> <p>No</p>	
<p><b>Signed:</b> CASSI</p>	<p><b>Date:</b> October 2011</p>

**SELECT COMMITTEE WORK PROGRAMME  
SUGGESTED REVIEW – PRO FORMA**

**Summary of issue you wish to be scrutinised, including key concerns and outcome for scrutinising the topic?**

Joint Working Relationships and the Partnership between the Police and the Council

Community policing and the councils security teams are coming under increasing pressure. It would be timely to determine if the joint working relationships and the partnership between the police and the council are producing the most cost effective and practical solutions in tackling crime and anti-social behaviour.

NOTE: ENTRIES BELOW RELATE TO ISSUE CATEGORIES OF THE PICK PROCESS.  
PLEASE REFER TO THE EXPLANATION NOTES TO THIS FORM FOR FURTHER INFORMATION.

**Public interest justification:**

Increasing crime and the perception that anti-social behaviour is escalating.

**Impact on the social, economic and environmental well-being of the area:**

Reduction in criminal activity will improve the wellbeing of residents and assist in attracting new businesses to the area thereby achieving stronger economic activity.

**Council performance and efficiency in this area (including organisation development) if known:**

**Keep in Context (are other reviews taking place in this area?):**

**Signed:** Cllr Phil Dennis

**Date:** November 2011

**SELECT COMMITTEE WORK PROGRAMME 2011/12  
SUGGESTED REVIEW – PRO FORMA**

**Summary of issue you wish to be scrutinised, including key concerns and outcome for scrutinising the topic?**

**Safety of Railway Crossing Points**

The safety and general management of railway crossing points (both vehicular and pedestrian).  
Likely to include liaison with Network Rail and British Transport Police, as well as Cleveland Police and the Council's Technical Services and Community Protection Services.

NOTE: ENTRIES BELOW RELATE TO ISSUE CATEGORIES OF THE PICK PROCESS.  
PLEASE REFER TO THE EXPLANATION NOTES TO THIS FORM FOR FURTHER INFORMATION.

**Public interest justification:**

Recent concerns expressed in relation to a range of locations, including Allens West, Station Road (Norton) and Toddington Drive.

**Impact on the social, economic and environmental well-being of the area:**

Concerns have been expressed about the safety of pedestrians, road users, and train staff and passengers.  
In addition, railway crossing points and lines are sometimes the focus of anti-social behaviour.

**Council performance and efficiency in this area (including organisation development) if known:**

No known data.

**Keep in Context (are other reviews taking place in this area?):**

None known.

**Signed:** Housing and Community Safety

**Date:** December 2011

**SELECT COMMITTEE WORK PROGRAMME  
SUGGESTED REVIEW – PRO FORMA**

**Summary of issue you wish to be scrutinised, including key concerns and outcome for scrutinising the topic?**

Review of Tees Valley Unlimited

Tees Valley Unlimited is the Local Enterprise Partnership for the Tees Valley. A partnership of public, private and voluntary bodies which coordinates activities, appropriate to a city region level, designed to improve the economic performance of the entire Tees Valley.

The review would seek to evaluate the performance of the partnership.

NOTE: ENTRIES BELOW RELATE TO ISSUE CATEGORIES OF THE PICK PROCESS.  
PLEASE REFER TO THE EXPLANATION NOTES TO THIS FORM FOR FURTHER INFORMATION.

**Public interest justification:**

Indirect as the partnership seeks to promotion of the Tees Valley Economy.

**Impact on the social, economic and environmental well-being of the area:**

The performance of the Partnership will have direct impact of the social, economic and environmental well-being of the area.

**Council performance and efficiency in this area (including organisation development) if known:**

Not applicable.

**Keep in Context (are other reviews taking place in this area?):**

No other reviews are taking place.

**Signed:** Councillor Bob Gibson

**Date:** November 2011

**SELECT COMMITTEE WORK PROGRAMME  
SUGGESTED REVIEW – PRO FORMA**

**Summary of issue you wish to be scrutinised, including key concerns and outcome for scrutinising the topic?**

Health and Social Care Bill

To review the impact of the Bill, including Stockton's readiness, partnership-working, and shadow CCG links/HWB work

NOTE: ENTRIES BELOW RELATE TO ISSUE CATEGORIES OF THE PICK PROCESS.  
PLEASE REFER TO THE EXPLANATION NOTES TO THIS FORM FOR FURTHER INFORMATION.

**Public interest justification:**

The reforms contained in the Bill will have an impact on how future local health decision and policies are made in the Borough.

Evaluating whether LAs have any genuine role in ensuring the well-being of residents in terms of NHS/health provision and how SBC is working towards this.

Genuine public concern over NHS reforms.

**Impact on the social, economic and environmental well-being of the area:**

Commissioning decisions and increased privatisation and variety of provider in the primary care markets etc could have a major impact on access to quality services for local people.

Genuine influence via HWB (no statutory powers over CCGs) and JSNA are seen as limited. Partnership working and using any available levers of influence will be key.

Ability/readiness to assume Public Health role (added resource or mainly DPH appointment)?

**Council performance and efficiency in this area (including organisation development) if known:**

n/a?

**Keep in Context (are other reviews taking place in this area?):**

(A Public Health update is due to be presented to Cabinet in February 2012.) – this is just one element of the bill.

**Signed:** Cllr David Rose

**Date:** November 2011

**SELECT COMMITTEE WORK PROGRAMME  
SUGGESTED REVIEW – PRO FORMA**

**Summary of issue you wish to be scrutinised, including key concerns and outcome for scrutinising the topic?**

Localism Act

Review to examine:

- 'Readiness',
- capability (eg commissioning)
- Specific proactive/community-focussed elements Neighbourhood Budgeting etc

NOTE: ENTRIES BELOW RELATE TO ISSUE CATEGORIES OF THE PICK PROCESS. PLEASE REFER TO THE EXPLANATION NOTES TO THIS FORM FOR FURTHER INFORMATION.

**Public interest justification:**

The Localism Act gives both communities and individuals new rights and powers, and includes reforms to the planning system and reforms to decision making for housing to ensure they are taken locally.

**Impact on the social, economic and environmental well-being of the area:**

The new freedoms and flexibilities for local government, rights and powers for communities, and reforms to the planning system and housing will impact on future policies and decisions that will shape the borough.

**Council performance and efficiency in this area (including organisation development) if known:**

**Keep in Context (are other reviews taking place in this area?):**

Report on preferred options for a new standards of conduct framework following the enactment of the Localism Bill to be considered at Cabinet in January 2012

**Signed:** Cllr David Rose

**Date:** November 2011

**SELECT COMMITTEE WORK PROGRAMME  
SUGGESTED REVIEW – PRO FORMA**

**Summary of issue you wish to be scrutinised, including key concerns and outcome for scrutinising the topic?**

Environmental Issues

**Domestic Recycling and Re-use:** Can we do more to drive through behaviour change and use of 'social marketing' techniques rather than through changes to collection frequency.

\*Note collection frequency changes covered in EIT and 2008-09 Scrutiny Review. This would look at other methods of driving increased domestic recycling.

The review will question whether:

- When we had a team was it effective, did it achieve step change: what are we doing now; is it strategic/effective?
- Do we have corporate capability for effective 'nudge'/behaviour change/influence/social marketing and the techniques to make people more energy/recycling conscious and responsive?
- Are there any financial resources available to support this? Is there a case for Invest to Save given potential ROI on recycled materials (how does market/price variances affect ROI)?
- Is there effective (good practice elsewhere) of authorities with high recycling rates and weekly collection regimes?

**Effectiveness of communication/marketing in driving behaviour change:**

This broader issues may also apply to:

- encouraging take-up of the Green Deal (and ECO) amongst resident householders going forward.
- encouraging domestic energy efficiency

This would look at encouraging behaviour change through more sophisticated 'social marketing' strategy – whether delivered in-house or commissioned, rather than more traditional communications channels and approaches and education approaches. It would involve greater understanding of messaging platforms to trigger change etc

NOTE: ENTRIES BELOW RELATE TO ISSUE CATEGORIES OF THE PICK PROCESS. PLEASE REFER TO THE EXPLANATION NOTES TO THIS FORM FOR FURTHER INFORMATION.

**Public interest justification:**

Growing public interest in recycling and green issues.  
Need to reduce carbon emissions across the Borough including from domestic waste management (eg EFW, landfill).  
There may be public scrutiny of our NI performance on recycling in the future.

**Impact on the social, economic and environmental well-being of the area:**

High impact on the environmental well-being of the area with increased recycling and awareness of environmental issues within the borough.



**Council performance and efficiency in this area (including organisation development) if known:**

NI 192 is roughly on target but is the (now local) performance indicator sufficiently stretching? What are other councils achieving (weekly collection)?

Reducing our % to landfill is a key priority but do we need to move out performance up the waster hierarchy towards more recycling (and less EFW)?

Can we improve consumer re-use? (waster hierarchy performance (ex NI 191 and ex BV84a through social/cause-related marketing?)

Care for Your Area (CFYA) has some strong expertise on this, making strategic inroads, particularly at schools level and previously via an 'outreach' team. New techniques (cost-effective?) could be explored.

**Keep in Context (are other reviews taking place in this area?):**

EIT Review of CFYA carried out in 2011  
Waste Management carried out in 2008/9

**Signed:** Cllr David Rose

**Date:** November 2011

**SELECT COMMITTEE WORK PROGRAMME  
SUGGESTED REVIEW – PRO FORMA**

**Summary of issue you wish to be scrutinised, including key concerns and outcome for scrutinising the topic?**

Social Marketing

The Review could include:

- effectiveness in driving behaviour change amongst residents for educational, environmental, health etc objectives
- knowledge/capability (techniques, strategy, approaches outside of 'standard' communications)
- commissioning experience (research, social marketing campaign strategy and delivery)
- track record
- future plans - including environment related – are there issues in terms of Public Health remit or will this be 'outsourced'?
- marketing/communications in general including key messages and communications strategy

NOTE: ENTRIES BELOW RELATE TO ISSUE CATEGORIES OF THE PICK PROCESS. PLEASE REFER TO THE EXPLANATION NOTES TO THIS FORM FOR FURTHER INFORMATION.

**Public interest justification:**

Encourage better understanding of behaviours across the varied demographics of our resident population in the borough

Improve health, environmental performance, education, aspirations, ASB etc

**Impact on the social, economic and environmental well-being of the area:**

Deliver improvements to quality of life and reduce inequalities by focussed and targeted social marketing to drive specific behavioural change amongst target resident cohorts, geographic areas and demographic profiles

**Council performance and efficiency in this area (including organisation development) if known:**

**Keep in Context (are other reviews taking place in this area?):**

**Signed:** Cllr David Rose

**Date:** November 2011

## **PICK Priority Setting**

### **P for Public Interest**

Members' representative roles are an essential feature of Scrutiny. They are the eyes and ears of the public, ensuring that the policies, practice and services delivered to the people of the District, by both the Council and external organisations, are meeting local needs and to an acceptable standard. The concerns of local people should therefore influence the issues chosen for scrutiny. This could include current issues. For example, dignity is consistently cited as a high priority for service users (e.g. Mid Staffordshire Enquiry, care in Winterbourne hospital) and scrutiny committees are well placed to influence the agenda locally and drive forward better quality services). Members themselves will have a good knowledge of local issues and concerns. Surgeries, Parish Councils, Residents Associations and Community Groups are all sources of resident's views. Consultation and Surveys undertaken by the Council and others can also provide a wealth of information.

### **I for Impact**

Scrutiny is about making a difference to the social, economic and environmental well-being of the area. Not all issues of concern will have equal impact on the well-being of the community. This should be considered when deciding the programme of work, giving priority to the big issues that have most impact. To maximise impact, particularly when scrutinising external activity, attention should also be given to how the committee could influence policy and practice. Sharing the proposed programme of reviews with Members, officer and key partners will assist this process.

### **C for Council Performance**

Scrutiny is about improving performance and ensuring the Council's customers are served well. With the abolition of external inspection regimes, scrutiny has an even more important role to play in self regulation. Members will need good quality information to identify areas where the Council, and other external organisations, are performing poorly. Areas where performance has dropped should be our priority. As well as driving up Council performance, scrutiny also has an important role in scrutinising the efficiency and value for money of Council services and organizational development.

### **K for Keep in Context**

To avoid duplication or wasted effort priorities should take account of what else is happening in the areas being considered. Is there another review happening or planned? Is the service about to be inspected by an external body? Are there major legislative or policy initiatives already resulting in change? If these circumstances exist Members may decide to link up with other approaches or defer a decision until the outcomes are known or conclude that the other approaches will address the issues. Reference should also be made to proposed programmes of work in the Council's plans and strategies

## PICK Scoring System

- **P**ublic Interest: the concerns of local people should influence the issues chosen

Score	Measure
0	no public interest
1	low public interest
2	medium public interest
3	high public interest

- **I**mpact: priority should be given to the issues which make the biggest difference to the social, economic and environmental well-being of the area

Score	Measure
0	no impact
1	low impact
2	medium impact
3	high impact

- **C**ouncil Performance and efficiency: priority should be given to the areas in which the Council, and other agencies, are not performing well or proposals which will support the current Efficiency, Improvement and Transformation Programme.

Score	Measure
0	'Green' on or above target performance
1	'Amber',
2	low performance 'Red'

- **K**eep in Context: work programmes must take account of what else is happening in the areas being considered to avoid duplication or wasted effort.

Score	Measure
0	Already dealt with/ no priority
1	Longer term aspiration or plan
2	Need for review acknowledged and worked planned elsewhere
3	Need for review acknowledged

Each topic will be scored under each category as indicated above. Where a category is not applicable, no score will be given.

### Weighting

Public Interest	Score x0.2
Impact	Score x0.2
Council Performance and Efficiency	Score x0.4
Keep in Context	Score x0.2